



A SURVIVAL GUIDE TO COLLEGE

Freshman Commuter Student Success



TO-DO

Student ID Checklist.....	1
Getting Logged on.....	2
Meal Plan Checklist.....	3
Razorbuck\$.....	4
Additional Food Information.....	5
Parking Checklist.....	6
Razorback Transit Information.....	7
Campus Study Spots.....	8
Tutoring on Campus.....	9
Tech on Campus.....	10
Employment.....	11
Pat Walker Health Center (PWHC).....	12
University Recreation (UREC).....	13

Tuition and Fees.....	14-15
Office of Integrity.....	16
FAFSA.....	17
Arkansas Academic Challenge.....	18
Freshman Commuter Student Success.....	19
Additional Student Resources.....	20-21
The First Semester Experiences.....	22
Notes Page.....	23
University Term Glossary.....	24-27
Common Apps Explained.....	28
Campus Map.....	29

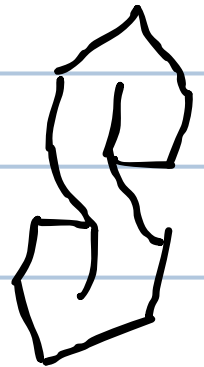
Student ID Checklist

You need to bring your driver's license or other form of government ID to the campus card office (3rd floor of the Union, ARKU 380) to get your student ID made.

You can also submit an ID picture online at campuscardoffice.uark.edu

Do you have a UA student ID?

Do you have a safe place to keep your ID on you at all times?



You need your
a.) _____ to get into the dining halls, for meal trades, campus events, and for some test days in class.

Numbers on the back of your ID

- UAPD/Razorback Patrol (provides escorts for walking alone on campus)
- Health Center (PWHC provides primary medical care)
- SAFE Ride (free late-night transportation for students around Fayetteville if you feel unsafe or uncomfortable)
- Mental Health Crisis (24-hour emergency mental health services)

Getting Logged On

Make sure you can you successfully log onto your:

- Blackboard
- UAConnect
- Outlook

Write down a password reminder so you don't get locked out!

Link to IT help:



Link to download Office 365:



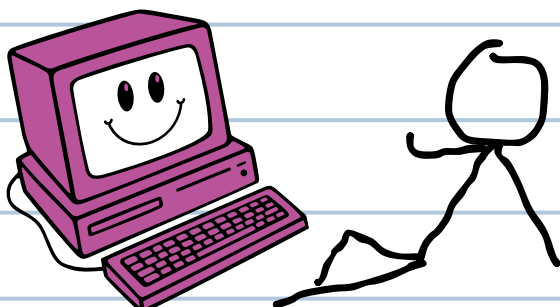
Did you download FREE



Microsoft Office 365 onto your computer?

<https://tinyurl.com/4erzk5em>

Microsoft Office includes access to Word, PowerPoint, Excel, and more!



Meal Plan Checklist

I'm not interested in buying a meal plan, but I know how to buy one if I want to later.

You bought a meal plan and it's called b.) _____

You have c.) _____ meal swipes per semester.

You have d.) _____ dining dollars per semester.

Dining dollars and swipes are good for only one semester.



*You can meal trade 3 times a day.

Link to meal plan info:



tinyurl.com/jm4k96nw

b.) name of your meal plan
c.) your number of meal swipes
d.) your number of dining dollars



Razorbuck\$

Razorbuck\$ is a system that allows you to upload money to your ID card and use it like a debit card.

- Money can be loaded online anytime for Razorbuck\$.
- The money lasts forever on your card, but you can request a refund at the end of the year to get your leftover money back.
- Razorbuck\$ offer 5% discount for all purchases

**Link to
Razorbuck\$ info:**
tinyurl.com/8yakzvn



Additional Food Information

Microwaves are available in the Commuter Lounge on the 6th floor of the Union and in the Union Food Court on the 3rd floor.

Meal Swipes: Used at 1021 and all-you-can-eat dining halls Fulbright and Pomfret.

Meal trades: Allows you to “trade” a meal swipe for a combo meal at a participating location, like Chick-Fil-A

Dining Dollars: Work just like debit at any food location on campus except Walmart and Subway in Garland parking garage. Dining Dollars are included in the purchase of your meal plan. Dining Dollars only last for one semester.

The Full Circle Food Pantry

- Serves ALL UARK students, staff, faculty, and their households.
- There are no requirements besides having a valid UARK or UAMS ID.
- Provides a three-day supply of groceries and personal care items, up to two times per week.
- Location: 324 Stadium Drive WAHR C204 Bud Walton Hall.



Link to dining locations & food pantry application:



tinyurl.com/bmz9abxf

tinyurl.com/4cmcp79p

Parking Checklist

I'm not interested in buying a parking permit, but I know how to buy one if I want to later.

You bought a permit and it's called e.) _____

You can park in f.) _____

Download the FlowBird App to pay for metered parking in the garages!



If you have a student permit, make sure to move your car before game days or you WILL be towed!

The "Work It Off" Program allows students to complete 3 hours of community service and apply this service to one parking citation per academic year.

Link to purchase parking permits, parking map & FlowBird:



<https://tinyurl.com/4tf7rf5b>
<https://flowbirdapp.com/app/>
<https://parking.uark.edu/parkmap.pdf>

Link to Athletic Parking Calendar



<https://tinyurl.com/4zkkn3wy>

e.) name of your parking permit
f.) your parking lots or garage

Razorback Transit Information

Razorback Transit is g.)_____ to all students.

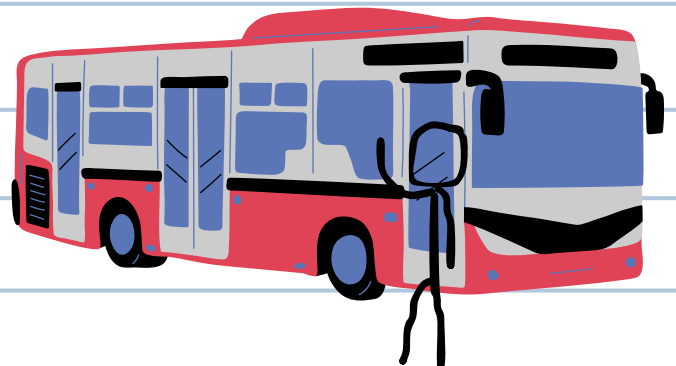
- The buses typically run during the school year 6:40am-10:40pm weekdays & Saturdays.
- There are 7 bus routes total with stops all over campus and some off-campus.
- Download the app Passio GO! to track the buses in real time.

Passio GO! and bus routes:



uark.passiogo.com

<https://tinyurl.com/yc8bs7c2>



g.) FREE!

Campus Study Spots

The Commuter Lounge on the 6th floor of the Union is a great place to study, hang out, and meet new people!

Popular places to study on campus:

Mullins Library — The 1st and 2nd floors are currently under renovation, the 3rd floor is a quiet study zone where talking is not allowed, and the 4th floor is a talking study zone. Student printers are temporarily located on the 4th floor as well.

Union — Private study rooms are available to reserve at unionevents.uark.edu

Gearhart Honors Lounge — Very quiet, comfy chairs, and couches

Starbucks — Lots of background noise

Link to reserve study rooms:



<https://uark.libcal.com/reserve>



Tutoring on Campus

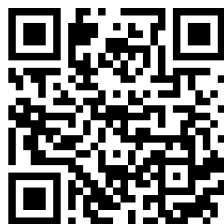
Tutoring is h.) _____ to all students!

- Tutoring can be scheduled for specific classes in person or online.
- The Writing Studio offers one-on-one writing consultations, helping you improve your work and develop new writing strategies.
- SI (Supplemental Instruction) or drill is sometimes required for classes like Biology, Chemistry & Math.

All of the above resources are located in the CORD building.

- The Math Resource and Teaching Center (MRTC) is located in Champions Hall 326 and offers free tutoring in mathematics and statistics, and is a great place to do math homework.

**Link to Mathematics
Resource and Teaching
Center**



<https://math.uark.edu/mrtc/>

**Link to schedule tutoring
or register for an SI:**



<https://tinyurl.com/2b3pyjzr>

Tech on Campus

The Student Tech Center is located on the 3rd floor of the Union.

Hours: M-F 8am-10pm, Sat-Sun Closed

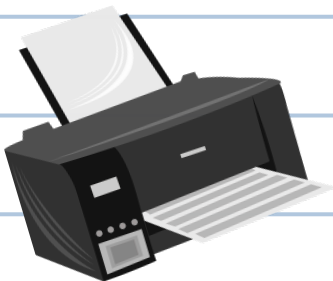
You get i.)_____ of free printing.

You can rent laptops and more

for free at the Student Tech

Center.

Link to tech rentals:



Computer lab locations

- Student Union
- J.B. Hunt Building
- Kimpel Hall
- Mullins Library
- Morgan Hall (Quad)
- Administrative Services Building

<https://tinyurl.com/bpa2uekx>

Employment

You can look for campus jobs online at j.) _____

Work-study is federal student aid which offers eligible students part-time campus job opportunities to work up to twenty hours per week.

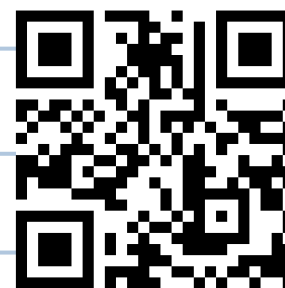
To be eligible, a work-study award has to be part of your k.) _____ and you must accept the offer in i.) _____

When going to jobs.uark.edu scroll down to the “Student Employment” section and follow the steps provided!

RazorTemps is another temporary form of on-campus work.

Handshake.com allows you to search for jobs and make connections for future careers.

Link to search for jobs at jobs.uark.edu:



<https://tinyurl.com/3kwd9ymx>

!.) UACconnect
k.) FAFSA
!.) jobs.uark.edu



Pat Walker Health Center

Pat Walker Health Center (PWHC) serves University students, faculty, and staff. They accept payment by Apple Pay, Google Pay, VISA, MasterCard, American Express, Discover, or Razorback\$. Charges can also be applied to your student UAConnect account.

Most insurance is accepted, but make sure to ask about yours when scheduling an appointment. You will be responsible for any charges not covered by insurance.

- PWHC is across from the bookstore and Garland parking garage.
- They have a Primary Care Clinic and a Women's Clinic (GYN).
- Counseling & Psychological Services (CAPS) are offered upstairs at PWHC, including group therapy workshops and individualized therapy sessions.
- CAPS offers 24-hour emergency mental health services for students, faculty, and staff.

Call (479)575-5276

Link to schedule an appointment:



<https://tinyurl.com/mpbc99b4>



*Missing appointments or canceling your appointment too late will result in a fee!

University Recreation (UREC)

UREC facilities are FREE for students.
All you need is your m.)_____ to
get in!

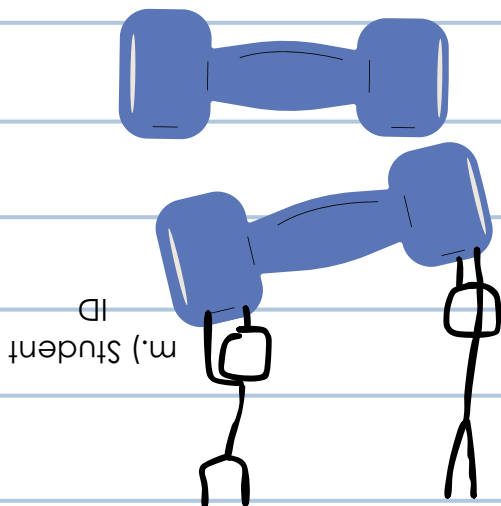
The HPER has...

- Main weight and workout rooms
- A pool, basketball courts, and an indoor rock climbing wall
- You can rent camping, cycling, and paddling equipment for a low cost

There is a smaller UREC gym on the 2nd floor of the Union.

UREC also offers fitness classes and different intramural activities like flag football, basketball, soccer, and more! The UREC Tennis Center off

MLK Jr. Blvd has 12 courts, equipment check-out, and restrooms.



Link to UREC website:
urec.uark.edu



Tuition and Fees

Tuition - the cost of your classes
Fees - money that goes towards facilities and services (included in cost of attendance)

Estimated Expenses for Academic Year (30 credit hours)

Tuition - \$7,895.40
University fees* - \$2,388.60
Total - \$10,284.00

*Note: The total listed is just an average estimate, tuition/fees vary depending on number of credits and college.

**Link to Tuition
Calculator:**

<https://tinyurl.com/4bb9xkk7>



Tuition and Fees

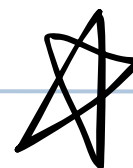
University Fees Breakdown:

- Student activity – provides funding for student organizations and campus events
- Student health – allows you to access health care at PWHC, funds the 24/7 Mental Health Crisis Hotline, group therapy, and CAPS Consultations
- Transit fee – funds the Razorback Bus Transit System
- Facilities fee – gives access to classroom/lab equipment, HPER, and \$35 of free printing for each student
- Library fee – allows access to the online library database
- Inclusive access materials – online course materials that you're instantly opted-in to pay for. You have the first few weeks of class to opt-out by going to the course Blackboard page.

*To check your itemized student invoice, go to UAConnect > Treasurer's Office tile > Account Summary by Term > window pops up (click "ok" until it goes away) > choose term > on the bottom right-hand side click "View Account Detail"



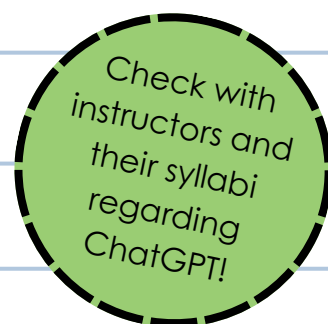
Office of Integrity



Academic dishonesty – actions that violate the university's code of conduct and give the student an academic advantage

Common Violations

- Sharing answers or test/quiz questions in GroupMe chats
- Not citing sources/materials properly (form of plagiarism)
- Reusing one's own work from previous classes (self-plagiarism)



Link to Office of Integrity Website:



honesty.uark.edu

Worried about being flagged for plagiarism? Use SafeAssign, it is a UARK provided tool to check your writings. Go to the QR code or link below to add the SafeAssign course to your Blackboard.



<https://tinyurl.com/mr37hmw4>



FAFSA opens n.)

FAFSA stands for O.) _____

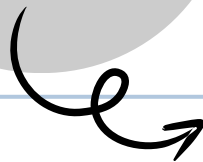
You must renew your FAFSA p.) _____
year!

Apply at q.) _____

r.) _____ should be at the s.) _____ of your to-do list!

Filing it gets you approved for federal and state aid like the Arkansas Academic Challenge scholarship, Pell grants, loans, work-study programs, and aid specifically for military families.

Write down a password reminder so you don't get locked out!



Link to FAFSA application:



studentaid.gov

n.) October 1st
o.) Free Application for
Federal Student Aid
p.) every
q.) studentaid.gov
r.) FAFSA
s.) top

Arkansas Academic Challenge

The “ t.) _____ Scholarship”

APPLICATION OPENS: U.) _____ APPLICATION CLOSES: V.) _____

\$1,000 freshman year | \$4,000 sophomore year | \$4,000 junior year | \$5,000 senior year

Apply at w.) _____

To be eligible:

You must be an Arkansas resident.

You have to file your x.) _____,

You must be enrolled in y.) _____ hours your first semester of freshman year and z.) _____ hours every semester after that.

You are currently enrolled in aa.) _____ credits/hours.

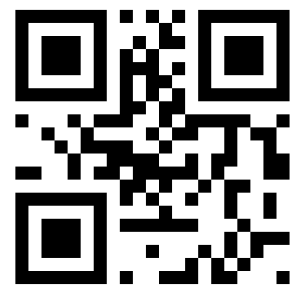
*You cannot use the Arkansas Workforce Grant here.



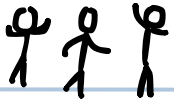
t.) Lottery
 u.) Oct 1st
 v.) July 1st
 w.) sams.adhe.edu
 x.) FAFSA
 y.) 12
 z.) 15
 aa.) your number of credit hours

Write down a password reminder so you don't get locked out!

Links to scholarship application:



sams.adhe.edu



Freshman Commuter Student Success (FCSS)

You can get answers to your questions or one-on-one help from a peer mentor by emailing Francesca at fdagrosa@uark.edu.

- The Commuter Lounge is located in ARKU 602 on the 6th floor of the Union.
- The Lounge has a TV, couches, microwave, fridge, lockers, and free scantrons for all students!
- Reasons to hang out in the Lounge: meet other commuter students, connect to campus resources, and access possible job opportunities as a student ambassador or peer mentor.

Link to FCSS website:



fcss.uark.edu/about/index.php

Additional Student Resources

The Multicultural Center (MC) provides academic, cultural and social programs intended to promote inclusiveness, foster achievement, and assist in the development and advancement of a diverse student body.

Multicultural Center Programs:

Cultural Identity Communities: Offers individual and collective community for Black, Latinx/Hispanic, Asian and Asian Pacific Island, Native and Indigenous, and LGBTQIA+ students. These communities provide opportunities for cultural celebration, connection, and student success.

La Oficina Latina: Promotes Latinx academic excellence within our college campus, through college readiness workshops and diversity education. Complete list of workshops:
multicultural.uark.edu/workshops.

LGBTQIA+ Mentoring: Pairs LGBTQIA+ student with faculty and staff who assist students in developing a positive sexual orientation and gender identity while developing knowledge, skills and tools to success navigate life in the fullness of who they are and want to be.

Safe Zone Allies Student Network: Meets weekly for students to gain skills and knowledge that will help them develop their LGBTQ+ advocacy and allyship.

Link to MC Programs & LGBTQIA+ Applications:

tinyurl.com/2wzkxyar
tinyurl.com/36xfadh9



Additional Student Resources

TRIO Student Support Services office is within the Commuter Lounge located in the Union on the 6th floor, ARKU 602, above the Verizon Ballroom.

The Center for Educational Access office is located in the Union on the 2nd floor, Suite 209.

TRIO Student Support Services (SSS):

- Program that provides academic skill-building, goal attainment, leadership development, financial literacy, cultural enrichment, and graduate school preparation.
- To participate, a student must be a U.S. citizen or permanent resident and be a first-generation college student, meet federal income eligibility requirements, or have a documented disability with the Center for Educational Access.

Center for Educational Access (CEA):

- Provides accommodations for students with disabilities, including extended time, distraction-reduced testing environment, brief breaks, etc.

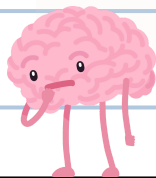
Links to CEA website & SSS Application:

tinyurl.com/5ypnp28w
tinyurl.com/3yut67vh

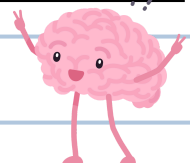
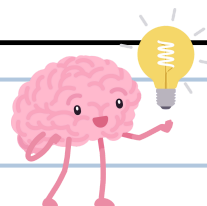


The First Semester Experiences

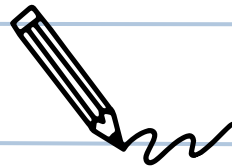
While everyone has their own individual experiences during college, freshman year can be one of the most challenging due to the new setting and the academic/life adjustments that come with this new era.



August	September	October	November	December
Adapting to commuting to campus	First exams and projects due	College expenses become "real"	Balancing college with personal life	Classes wrapping up and finals
Adjusting to the pace of a new semester	Time management issues	Planning for the remainder of the semester	Managing stress and balancing healthy habits	Managing time, stress, and tasks
Social overcommitment	Lower-than-usual grades and accessing resources (i.e. tutoring)	Getting into a routine	Degree planning and advising for Spring enrollment	Feelings of exhaustion (but you get over a month-long break!)



Notes Page



Questions I have:



Things I need to do:



University Term Glossary

ACADEMIC ADVISOR

Helps you explore programs of study and select appropriate classes. Your advisor is assigned to you within your college and you will meet with them each semester. You can make an appointment with them through UASuccess on Blackboard.

THE CORD

Also known as "The Student Success Center." This building is next to Peabody Hall and Old Main. It houses tutoring, SI, advising, and mentoring. It is a popular place to study, and has a restaurant and Starbucks.

BLACKBOARD

The course management system that most professors use to share course materials such as assignment submissions, grades, and handouts. The class information is only available while you are enrolled in the course, so save any information you think you will need in the future.

CLICKER

Clickers are commonly used in classes for attendance and for in-class questions. There are physical clickers as well as an app called TurningPoint available on computers and smartphones.

TRANSCRIPT

An official record of the courses a student has taken, and grades received. Your unofficial transcript for academic advising is in UAConnect. You may request an official transcript from the Registrar for a small fee.

University Term Glossary

DEGREE AUDIT

An outline of the course requirements that you have already completed and are yet to complete for your degree. Found in UAConnect. Ask your academic advisor if you have any questions.

FALL BREAK

October 14th-15th is the 2024 student Fall Break. No classes are held during Fall Break. University offices will be open.

RAZORBACK RECOVERY

A support group for students who are battling addiction or wish to change their substance use behavior.

DINING DOLLARS

You can spend these at any Chartwells retail location on campus such as the Union Food Court, Starbucks, Slim Chickens, etc. Also, Dining Dollars may be used to buy a guest meal in any hall, can be reloaded in two increments of \$50 per semester, and expire at the end of each semester.

FERPA (FEDERAL EDUCATION RIGHTS AND PRIVACY ACT)

A federal law that protects your education records, such as personal information, grades, enrollment records, and class schedules. You can decide if your guardians or other institutions may have access to your academic information and update your preferences on UAConnect.

University Term Glossary

FINANCIAL AID ADVISOR/ COUNSELOR

A staff member who will explain ways in which you may find academic funding. Email finaid@uark.edu, call (479)575-3806, or go by 114 Silas Hunt 8 a.m. to 5 p.m. Monday through Friday to meet with an advisor.

RAZORBUCK\$

Can be used like cash on campus and at some locations off campus. They do not expire while the account is active. Razorbuck\$ can be reloaded at any time throughout the year with a minimum deposit of \$5. You receive a 5% discount on food when using Razorbuck\$.

HOGSYNC

Website that allows students to get information about events and organizations on campus. Also used as a platform for students to fill out application or registration forms for campus activities.

RAZALERT

The University's alert system used to send out timely information due to weather, safety, and campus closures. Make sure your cell phone number is accurate in UAConnect in order to receive alerts.

REGISTRAR

Office of the Registrar supports academic life such as class registration, transcripts, and graduation.

University Term Glossary

TECH SPOT LABS

Computer labs where students can print, ask for computer assistance, and use a wide range of software including Respondus Lockdown Browser, and math and statistical software needed for many courses. Located in the Arkansas Union and Mullins Library (find additional locations: its.uark.edu).

SI (SUPPLEMENTAL INSTRUCTION).

(ALSO KNOWN AS "DRILL").
A series of weekly group study sessions for students in historically challenging courses. SI is taught by students who excelled in the course previously. Some instructors require SI. See which classes have SI and register: class.uark.edu/supplemental-instruction.php

RSO (REGISTERED STUDENT ORGANIZATION).

Student-created organizations or clubs that are based on a common interest. You can get involved with many of them on HogSync.

UACONNECT

A student information system that students use for enrolling in classes, checking their degree audit, reviewing academic advisement reports, accepting financial aid, submitting payments to their student accounts, and applying for graduation.

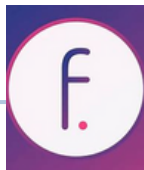
READING DAY

The last day before finals week. There is no class on this day and all assignments are due before reading day.

Common Apps Explained

FLOWBIRD

App to pay for parking in metered campus parking spots and garages



PASSIO GO!

App that tracks Razorback Transit in real-time



GROUPME

Social networking app used by Freshman Commuter Student Success and others to communicate with groups, large or small.



HANDSHAKE

Networking app to connect with employers, internships, jobs, etc.



OFFICE 365

As a student, you have access to the most widely used Microsoft Office products. Please visit its.uark.edu for instructions to download Office 365 and any other software available to students.

Still unsure about something?

Join the UARK Freshman Commuter GroupMe or visit the Freshman Commuter Student Success office on the 6th floor of the Union (ARKU 602) and ask us!

Scan to join the GroupMe:



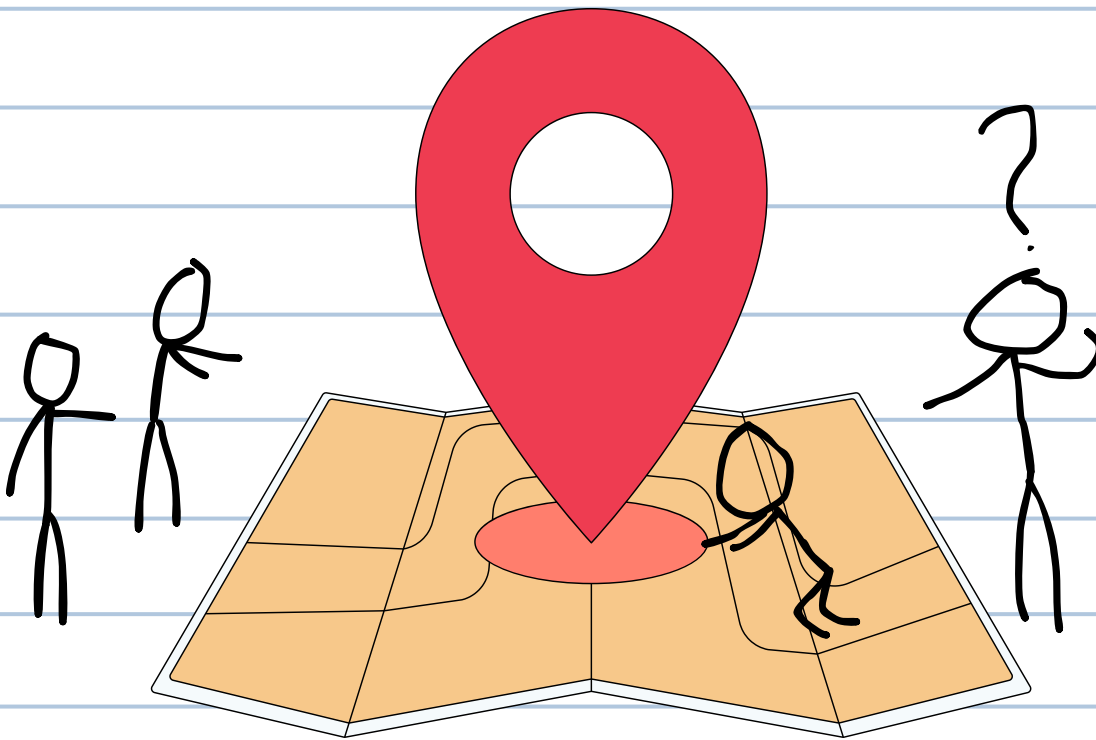
Campus Map

3-DIMENSIONAL CAMPUS MAP

Scan the QR code or visit the tinyurl below to access an interactive map of campus. The map is able to show you what buildings look like and provide directions to different spots on campus.

Scan to access the interactive
3D map of campus:

<https://tinyurl.com/s28wphnv>





Freshman Commuter Student
Success created this booklet
for the 2024 school year.

S
U
P
E
R